



STRATEGIES FOR COVID - 19 & DISTANCE LEARNING



Our Mission

The Girls' School of Austin provides an **academically challenging** education for girls in a community that fosters **creative learning** and **personal excellence**. Our mission is to develop **confident young women** who lead **intellectually vibrant and fulfilling lives**.



What is Guiding Us?

Our allegiance to the **education** and **health**, both physical and emotional, of our girls, faculty, and their families will be our **guiding principle**.

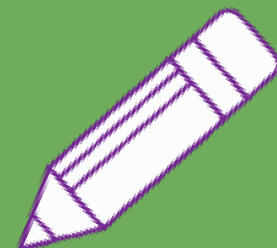
GSA will consider all regulations and guidelines, the state and local cases, and trends to drive our **evidence-based approach**.

Community Input

GSA Families,
Faculty & Staff



2020 – 2021 Task Force



Medical/Scientific Advisory Council



GSA Leadership

Head of School
& GSA Board





Members

2020 – 2021 Task Force

Rosa M. Peña
GSA Head of School

Academics and Instruction

Frances Ramberg
Meredith Hayden
Felicia Frazee
Ilene Novy
Anne Seekatz
Jenny Leeds
Ana Rie
Jenny Sparks
Lorna Torrado

Policy and Guidelines

Tricia Yost
John Melton
Nicola Davies
Regina Lim

Facilities

Bronson Dorsey
Regina Lim
Nicola Davies

Communications

Linda Maher
Alexis Sanford
Trish Morrison
Tricia Yost

Community Building

Lorna Torrado
Brandon Ward
Jenny Sparks
Linda Maher
Ana Rie
Rachel Lee
Frances Ramberg

Summer Project Management

Dick Hoover

Medical/Scientific Advisory Council

Rosa M. Peña
Dr. Nicola Davies
Dr. Michael Grad, MD
Dr. Bri Tristan, MD
Dr. Ami Patel, MD
Dr. Nehal Rana, MD

Academic Phase In Plans

We have created **six academic phase-in plans** to determine when and how to bring our girls safely and smartly on campus. Each of the academic plans have details that our staff will be **ready to implement** when a shift is needed. These phases will accommodate a variety of situations that may arise. Moving between phases will be driven by on **evidence-based** recommendations. **Flexibility** and ongoing **communication** will be key.

1 ↔ 2 ↔ 3 ↔ 4 ↔ 5 ↔ 6

Phase	Academic Plan	Instructional Description	Notes
1	Distance Learning for All	All instruction through distance learning.	<ul style="list-style-type: none"> All-school events held virtually.
2	Distance Learning for All w/Limited Time on Campus	All core instruction through distance learning + social emotional learning (SEL)/specials on campus for all grade levels.	<ul style="list-style-type: none"> Outdoor spaces will be utilized as much as possible. Some scheduled small groups, 1-on-1 on-campus check-ins, or tutoring could be implemented. All-school events held virtually.
3	Distance Learning for All 1- 8 Limited Time on Campus K Increased Time on Campus	Kinder: small groups on campus 4x/week for limited hours; Grades 1- 8: most core instruction through distance learning, limited time on campus for SEL/core instruction/specials, 2 hours/week. Synchronous & asynchronous learning.	<ul style="list-style-type: none"> Snack time only; no lunch on campus. Outdoor spaces utilized as much as possible. Kinder may need to split into 2 cohorts. Provide livestreaming or other distance learning options for off-campus students. All-school events held virtually.
4	Time On-Campus for All in Small Cohorts and Some Distance Learning for All	Some on-campus & some distance learning for all; On-campus-small A & B cohorts- K-5: 2x/week. Grades 6-8: 1x/week up to 3 hours. Synchronous & asynchronous learning.	<ul style="list-style-type: none"> Snack time only; no lunch on campus. Outdoor spaces will be utilized as much as possible. Core academics, specials, and SEL possible. Provide livestreaming or other distance learning options for off-campus students. All-school events held virtually.
5	Expanded Time On-Campus for All and Some Distance Learning for All	Expanded time on-campus & some distance learning for all; Increase class size and/or increase hours on campus for all. Synchronous & asynchronous learning.	<ul style="list-style-type: none"> Snack Time and lunch on campus. Outdoor spaces will be utilized as much as possible. Small cohorts meet on campus using staggered schedule. Provide livestreaming or other distance learning options for off-campus students. All-school events held virtually.
6	Learning On-Campus for All	All classes resume on campus.	<ul style="list-style-type: none"> Possibly limited school events.



Beginning the School Year



- School starts on **August 19.**
- We will begin in **Phase 1** – Distance Learning for All.
- All school-wide events held virtually.
- Phase 1 will remain in effect until at least September 7.
- We are exploring creative ways to bring our community together.
- Materials for distance learning will be distributed before the start of the school year. *More info coming soon.*

Distance Learning

We are committed to **delivering the GSA educational experience** and to **build community**.

Full GSA Experience

- Core Subjects
- Specials
- SEL



Engaging Learning

- Age Appropriate
- Balanced Approach
- Synchronous & Asynchronous
- Creative & Rigorous



Community Building

- Focus on Connection
- Collaborative
- Adapting Traditions

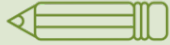







Teacher Training & Support

- Software training
- DL Best Practices
- Shared Knowledge



GSA Online Code of Conduct

Be Prepared 	<ul style="list-style-type: none">• Be up, dressed for the day, and sitting at a desk or table with all your materials handy.• Complete assignments in a timely manner.
Be Respectful 	<ul style="list-style-type: none">• Be patient, polite, and respectful to your teacher and classmates.• Participate with an open mind.• Remember that the online classroom space is a classroom.
Stay Engaged 	<ul style="list-style-type: none">• Pay attention and try to stay focused. Taking notes can help with this, as does minimizing distractions around you.• Keep your focus on the class and do not visit other sites, message with friends, or use other devices during class.• Keep your video on during class unless specifically directed otherwise.• Avoid distracting your teacher or classmates, either on video or through chat. This includes changing names or backgrounds and distracting movements.
Respect Privacy 	<ul style="list-style-type: none">• Do not record and/or post any classroom activity without permission.• Do not share meeting IDs or passwords.
Ask Questions 	<ul style="list-style-type: none">• Reach out for help if you have any questions or concerns (via email, or in the virtual classroom).• Remember we are all navigating a new system and your teachers are here to help!
Academic Honesty 	<ul style="list-style-type: none">• You must complete only your own work, and not share work with peers, including written work, homework, tests, and quizzes.• Use online resources for assignments only as directed by the teacher.• Academic honesty is of critical importance at GSA. Any violation of the academic honesty code is considered academic misconduct and will be addressed accordingly. Please see handbook for complete policy.



COVID Safety Protocols

For us to have a successful opening our community has a shared responsibility to follow safety guidelines and protocols including:

- Masks/face coverings worn by all students, faculty, and staff.
- Physical distancing during instructional and recreational activities.
- One - way movement on campus.
- Staggered drop-off and pick-up times.
- Temperature checks prior to drop off.
- Daily health checklists.
- Non-essential visitors restricted.
- All families must agree to follow a set of community guidelines – *coming soon*





Facilities Upgrades

Facility Preparation Updates:

- 20 sanitation stations installed throughout campus.
- Digital thermometers on campus.
- Toilet seats with lids installed.
- PPE supplies on campus – masks/face shields.
- Plexiglass barrier installed in front office.
- UVC lights in all 16 HVAC units.
- Enhanced cleaning and sanitation procedures including aerosol disinfecting.





GSA's Commitments

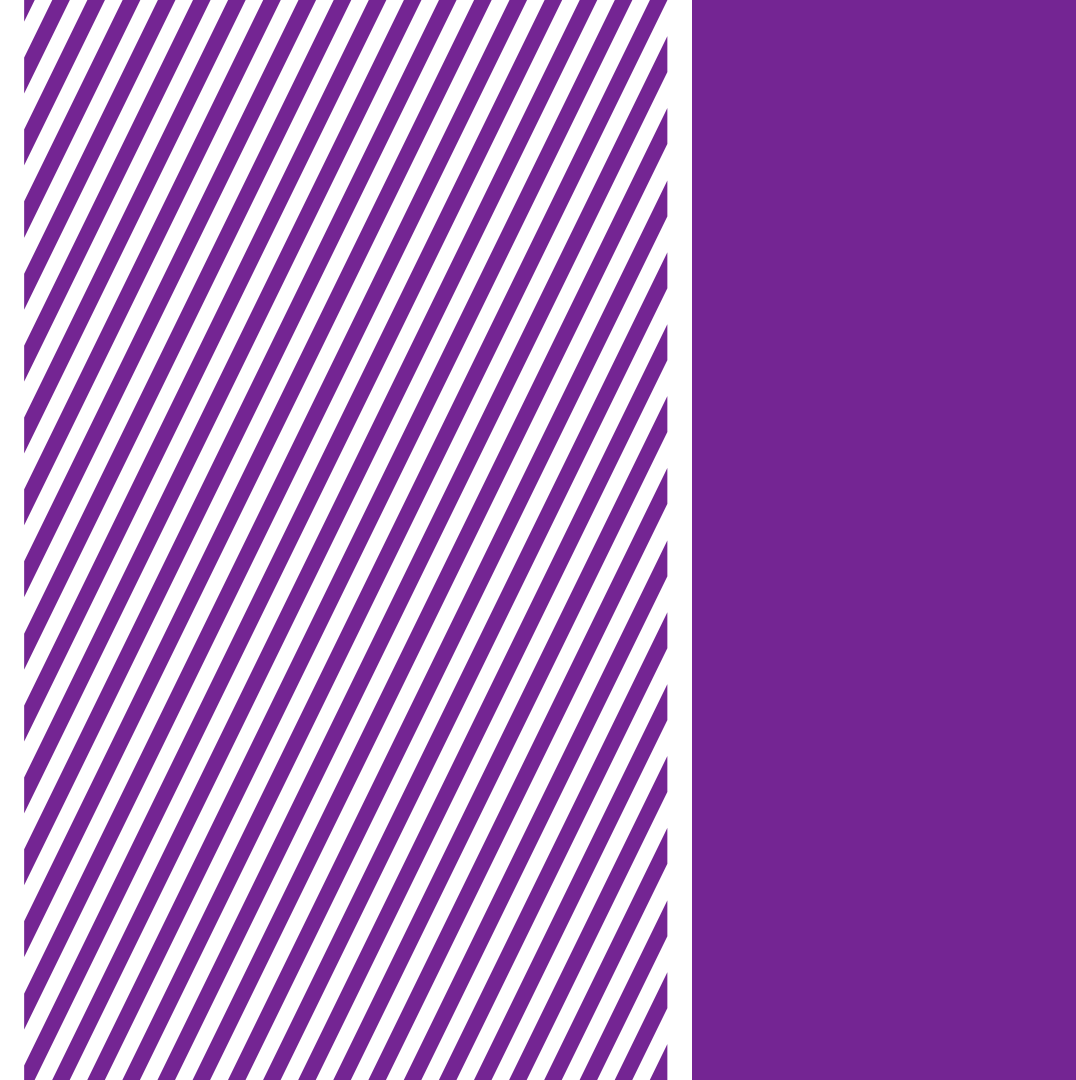
- Timely communication with regards to our plans as we move between phases.
- A safe and secure environment for our community.
- A robust learning experience and supportive environment virtually and in person.
- Distance learning options designed to meet the needs of our community.
- Prompt and appropriate communication around a confirmed case on campus.



Community Commitment

As part of our shared responsibility to the safety of our community we ask that you follow our safety protocols including:

- Any child with a temperature higher than 100.4°F or other symptoms related to COVID will not be permitted to attend school.
- Students should bring a supply of masks each day and 2 Ziplocks for clean and dirty masks.
- Families should commit to limiting exposure to others and adhere to CDC guidelines for healthy habits during COVID.
- Any student or family member who tests positive is required to notify the school immediately and quarantine for 14 days. A negative test result is required for return to campus.





Preparing Your Child

- Create a comfortable workspace at home with supplies organized nearby.
- Have your child practice wearing a mask and taking it on and off.
- Practice regular hand-washing. *Make it fun – use songs, visuals, or challenges (ex. wash off a stamp).*
- Have your child get in the habit of shutting the toilet seat before flushing. *Practice the “close, flush, wash” routine.*
- Practice maintaining a physical distance with others.
- Review the GSA Online Code of Conduct as a family.
- Listen to your child’s concerns and answer their questions.
- [Tips for talking to children about COVID -19](#)





Thank you for your continuous support! Whether we are together or apart, we will ensure that our girls are healthy, safe, engaged, supported, and challenged. Together we will make this unusual school year a positive and memorable one for our girls.

Together we are GSA Strong!

